



A DISAPPEARED COMMERCE - COLUMBIAN MEAT MARKET

4301 Lancaster Ave, Philadelphia, PA



Southwest Elevation



Corner Elevation



Northeast Elevation

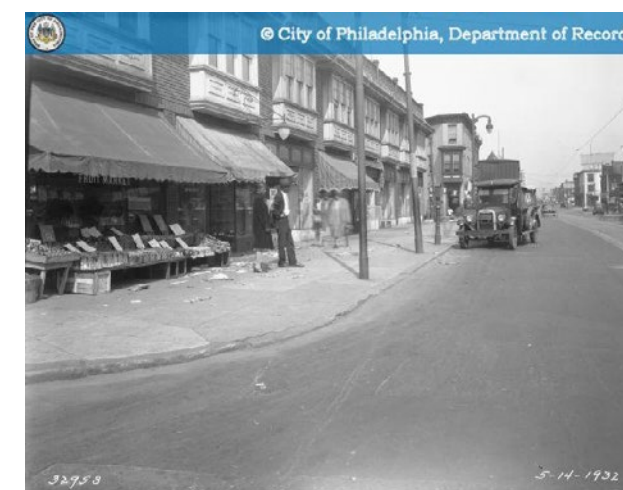
Significance 1:

A MIXED USE OF COMMERCIAL & RESIDENTIAL

The Columbian Meat Market is significant for its mixed-use of commercial and residential purpose and the composition of two buildings architecturally. The position at the corner of street created special triangular shape building, which marked an important moment to the block as a result of opening 43rd Street between Ogden Street and Parrish Street between 1888 and 1892. It contained typical characteristics of commercial building type along Lancaster Avenue, which were specialty stores with large opening windows facing toward streets for displaying products. But also partially maintained the two-story residential brick building' appearance. Though current being vacant, the existence of Columbian Meat Market reflects the once prosperity commerce brought by electric trolley in the neighborhood and is a unique example of combining commercial and residential both physical buildings and utilitarian functions.

Displaying Windows

Like all other stores on the Lancaster Ave, the Columbian Meat Market also has big selling windows facing to the street for displaying products with projecting shed.



A historic photo of store just across Lancaster Ave, showing how Columbian Meat Market might look like in the past. ©PhillyHistory.org

Altered & Sealed Doors

The current double door entrance Southwest facade on is not the original entrance when the building was built. There used to be a twice-bigger entrance that was probably used during the meat market time as an entrance to the store. It is now sealed by stonework. There is one door on every facade facing the street that is sealed by stonework. These alterations are all evidences of the combination of two buildings and transformation of businesses type in the past. Each alteration is for meeting different demand by the owner. The alternation work was done roughly without a unity in using the same materials and methods as the original architecture forms.

Black & White Strip

The square tiles in black and white color are common expressions of sanitation as a meat market. The continuous strip that connects first and second part of the building, as well as the same color pater of yellow and red show the two buildings belonging to the same business. The decorative tile strip in the center has advertisement slogans for the Belmont Roofing & Metal Supplies store opened in 1967: "EVERYTHING FOR ROOFING, PAPER COATINGS, SIDINGS, CEMENT".

Projecting Windows

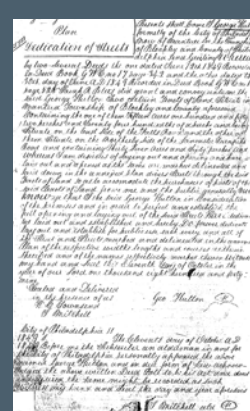
There are projecting bay windows on both southwest and northeast facade which give the building a special looking comparing to the surrounding architectures. The frame projecting bay windows are covered by the asphalt hexagon shingle, which expose their original green color after the surface pilled off. The southwest one has a better condition than the northeast one probably due to the less sunshine.

Significance2:

A PROSPERITY WITH STREETCAR DEVELOPMENT

The Columbian Meat Market is historically significant for associating with the commercial boost on Lancaster Avenue brought by the electronic trolleys in late 19th century and early half of 20th century. The high accessibility along the Lancaster Avenue brought specialty stores, especially butcher and grocery shops, to the street, which formed a distinctive commercial district that was different from surrounding dense rowhouse residential area. In general, the growth of transportation increased population, giving prosperity and urban characteristics to the neighborhood. The period of significance starts with the time when the commercial section of property was built and the boost of commercial activities started in 1892, and ends when the business changed to roofing & metal supplies in 1965. The transfer of the selling products reflected the decreasing demand for necessities and the decline of neighborhoods in general.

TIME LINE OF DEVELOPING HISTORY



1849

Division of block according to George Hutton Plan - Dedication of Streets

David G.W.C. 76 p. 430. George Hutton, a merchant and a real estate developer, bought 40 acres of land on northwest corner of Mantua Farm. Hutton decided to subdivide his land and gave up his right to the government to put public streets in his property.



1888-1892

Opening of 43rd St between Ogden St and Parrish St

(left) © Brantley 1892 Map, showing the open up of 43rd street without the built of second part of the building.
(right) © Brantley 1895 Map, showing the second part of building been built

1892-95

Second part of building built by Robert Milligan for commercial & residential use



1900s

Electronic streetcars introduced to Lancaster Ave

© University Archives, showing the horse-drawn trolley at 43rd st and Haverford st in 1900s. The electronic trolley replaced the horse-drawn trolleys in 1900s, which made the connections between this suburban neighborhood to center city much closer than other neighborhoods.



1945

Transformed to an independent store by Samuel Lieberman

© PhillyHistory, a photo in 1914 showing and black away from the building with electric street car in center of Lancaster Ave. This is also a typical view of commercial stores with projecting sheds and brick rowhouses.

Period of significance ended

1967

Transformed to Belmont Roofing & Metal Supplies

1988

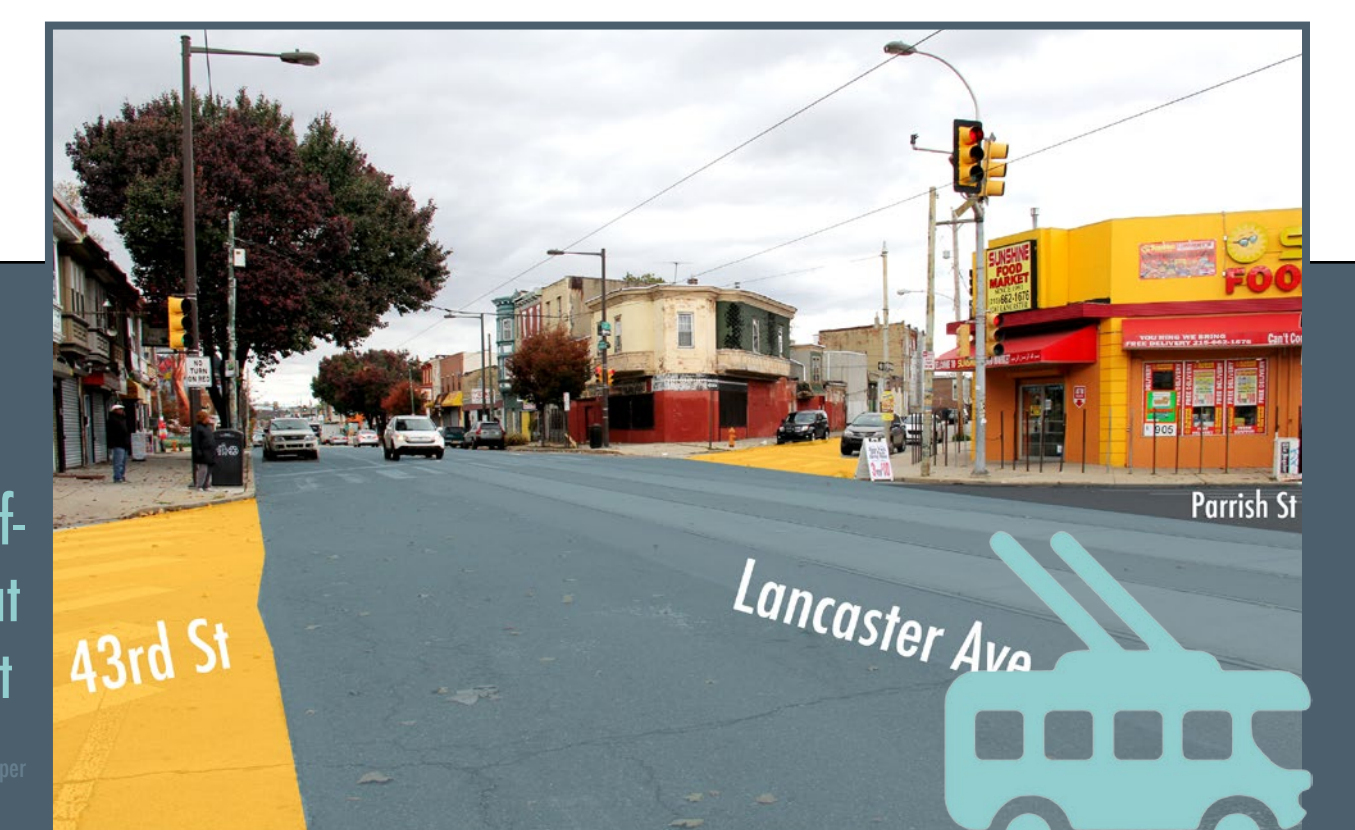
Registered as Belmont Roofing & Metal Supplies. Inc at Philadelphia's government

© Philadelphia Tribune Sept. 21 1968. First advertisement of the Belmont Roofing & Metal Supplies company on the public newspaper in the year founded.



Present

Vacant
Contemporary context with building in the center at the cross of Lancaster Ave, 43rd st and Parrish st.



Chuhan Zheng
HSPV 624
Dec. 2014